

2017 HYUNDAI

ACCENT



2017 HYUNDAI ACCENT

COMMON SENSE MEETS THE UNCOMMONLY SENSUOUS.

If you're considering the Hyundai Accent, we know one thing about you already: You're sensible. After all, in each of the past two years, some of the most revered authorities on automotive excellence have ranked Hyundai Accent as highest in initial quality. Here's another thing we know: You don't want an ordinary subcompact car.

Which is why our designers crafted the 2017 Accent's modern, refined interior with more room than the Chevy Sonic or Toyota Yaris.¹ It's so roomy, the EPA – the government agency responsible for classifying cars – actually moved Accent a class above into the larger compact car segment.

Of course, you want a car that's not just the right size, but the right style, too. Accent's exceptional roominess is wrapped in a distinctive modern shape. No matter which model you choose – the 4-door Accent sedan or 5-door Accent hatchback – you're treated to a design so sophisticated, it's like fluidic sculpture that's flowing with energy. Even when it's parked.

Now, back to the sensible you: Accent's safety, comfort and convenience features offer such exceptional value, we created a new version of Accent for 2017 – the Value Edition. It extends our Accent sedan's driving fun with performance enhancements like 16" alloy wheels and rear disc brakes, along with interior refinements like steering wheel audio controls and a Bluetooth® hands-free phone system with voice recognition.

All of which makes Accent uncommonly rewarding to drive.



¹Claim based on comparison of 2016 specifications on manufacturer websites.



ACCENT SPORT in Pacific Blue / ACCENT VALUE EDITION in Ironman Silver



¹ Claim based on comparison of specifications on manufacturer websites. ² Electronic Stability Control (ESC) cannot control your vehicle's stability under all driving situations. ESC is not a substitute for safe driving practices. No system, no matter how advanced, can overcome physics or correct poor driving. The driver is always responsible for controlling the vehicle and must use caution to avoid loss of control in all driving conditions. Speed, road conditions and driver steering input will affect whether ESC can help prevent loss of control. See Owner's Manual for details. The Traction Control System is meant to enhance conscientious driving habits and is not a substitute for safe driving practices. ³ The Supplemental Restraint System (SRS) is designed to work with the 3-point seatbelt system. The SRS deploys in certain frontal and/or side-impact collisions where significant injury is likely. The SRS is not a substitute for seatbelts, which should be worn at all times. Children under the age of 13 should be restrained securely in the rear seat. NEVER place a rear-facing child seat in the front seat of a vehicle that has a passenger-side airbag. ⁴ Estimate with manual transmission. EPA estimates for comparison only. Your actual mileage will vary with options, driving conditions, driving habits and your vehicle's condition. ⁵ Not available on Accent Sport. ⁶ Standard on Accent Sport Hatchback, available on SE Sedan and Hatchback models.

ACCENT VALUE EDITION in Ironman Silver

PRECISION ENGINEERING

ROOM FOR EVERYTHING. INCLUDING INNOVATION.

The 2017 Hyundai Accent has plenty of room for passengers. But we also made plenty of room for engineering substance. A body made with high-strength steel components creates a rigid, lightweight structure that helps improve handling and safety. Performance is also aided by aerodynamic lines that register a low 0.28 drag coefficient – lower than Honda Fit, Nissan Versa or Ford Fiesta.¹

An impressive list of standard safety features includes ABS with Electronic Brake-force Distribution, Brake Assist, Vehicle Stability Management with Electronic Stability Control and Traction Control System,² six airbags and active front head restraints.³

When starting uphill, Accent's available automatic transmission with SHIFTRONIC® uses Hillstart Assist Control to help prevent rolling backwards. Behind the wheel, Motor Driven Power Steering is tuned to create a steering feel with an accent on responsiveness.

A Gasoline Direct Injection engine helps achieve both powerful performance and remarkable fuel efficiency. With 137 horsepower, Accent's 1.6L engine is more powerful than Fit, Versa or Fiesta. Yet it gets up to an EPA-estimated 37 MPG on the highway.⁴ So now you've got even more room to roam.



AERODYNAMIC BODY



COEFFICIENT
OF DRAG **0.28** Cd

TRACTION UNDER CONTROL

Accent comes standard with an arsenal of advanced traction control technologies: Vehicle Stability Management. Electronic Stability Control. And a Traction Control System that reduces wheelspin under acceleration. They work together to help keep Accent glued to the road and your mind at ease.

SIX SPEEDS, YOUR CHOICE

Manual or auto? We know, it's a tough question. The standard 6-speed manual transmission gives you an engaging, hands-on experience.⁵ Or you can sit back and let Accent handle the gear shift changes. An available 6-speed automatic transmission with SHIFTRONIC seamlessly selects the right gear for the situation.

ACTIVE ECO EFFICIENCY

Accent gets the most out of every drop of fuel with an Active ECO System that helps improve fuel economy at the press of a button.⁶ Instantly, the engine mapping shifts to favor a more fuel-saving response. Accent's engine also features Dual Continuously Variable Valve Timing, a technology typically found in far more expensive models. It creates a precise balance of maximum performance with minimal fuel consumption.

HEAR THAT? NEITHER DO WE

Hyundai engineers went after one of the biggest issues facing compact and subcompact cars: Noise. Fine-tuning everything from the stiffness of subframe components to the insulation of the side mirrors and the shape of the antenna helps make the 2017 Accent remarkably quiet inside.



COMFORT & CONVENIENCE

BIG ENOUGH TO FIT YOUR DAILY LIFE.

How did our engineers build a subcompact that functions like a bigger car? They studied what you carry around with you every day – from bags and boxes to water bottles, your morning cup of coffee and, of course, your mobile devices.

That's why, when you sit inside Accent, there's a place for practically everything. A sliding center armrest storage box and multiple storage areas throughout the cockpit give Accent more storage capacity than its key competitors. The Accent sedan also has the most front head room and most front and rear shoulder room in its class, too.¹

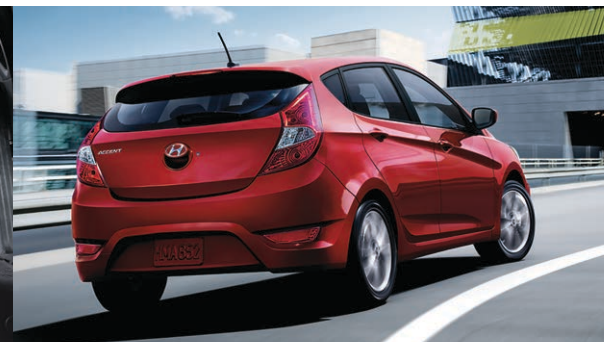
We've filled this space with standard features like an air conditioning system with cabin air filtration, a one-touch triple turn signal, dual front cupholders and bottle holders in the front map pockets. A 6-way adjustable driver seat and tilt steering wheel ensure optimal driving comfort. And with options like steering wheel controls for the audio system and cruise control, the ability to turn up the volume of your life is at your fingertips.



¹ Claim based on comparison of specifications on manufacturer websites.



ACCENT SPORT in Black Cloth



21.2 CU FT
WITH REAR
SEATS UP



**BEST-IN-CLASS
CARGO VOLUME**

60/40 SPLIT REAR SEATING

Some days, you need to carry cargo, not passengers. Other days, it's the reverse, right? Accent quickly converts its rear seating area with rear seatbacks that split 60/40. Giving you the versatility to configure your car so it handles whatever's in your weekday or weekend plans.

ACCENT SPORT HATCHBACK

Looking for an even sportier flair with added driving fun? Then be sure to check out the Accent Sport Hatchback. It includes sport-tuned steering, 16" alloy wheels with rear disc brakes and a tilt-and-telescopic steering wheel wrapped in leather.

BEST-IN-CLASS CARGO VOLUME

With its 2nd-row seats up, the Accent SE Hatchback offers more cargo space than Toyota Yaris, Nissan Versa or Mazda3 5-door – a bulk-swallowing 21.2 cubic feet, to be exact. Not even the Nissan Juke compact SUV can match that.¹ And with the seats down, Accent has up to 47.5 cubic feet of cargo space available. Plenty of room for snowboarding gear, impulse buys...and everything in between.

2017 ACCENT VALUE EDITION

Our newest edition to the 2017 Accent lineup is the Value Edition. It comes standard with style and performance features like 16" machine-finish alloy wheels and rear disc brakes. Inside, the value on modern-day convenience is unmistakable, with standard features like steering wheel audio controls and a Bluetooth® hands-free phone system with voice commands and wireless audio streaming.





H
I
C
P
E
F
TRIPB
119 mi
167 mi



AIRBAG

RADIO MEDIA
PHONE
MIX TRACK
POWER PUSH
VOLUME
XMI
12:48
37
Rock
AC/DC
Play Ball
SCAN
MENU
ENTER
TUNE
FILE
Bluetooth (SXM) MP3

HEAT
A/C
PASSENGER AIR BAG OFF
REAR

AUX iPod USB



HUMAN-FOCUSED INNOVATION

WE TRUST YOU'LL BE COMFORTABLE AS THE CENTER OF ATTENTION.

Welcome to the one place where you know it's going to be all about you. Well, you...and those lucky enough to travel with you.

Accent's attentive ways start with a steering wheel that gives you easy command of the road in front of you, and the technology that surrounds you. Without ever taking your hands off the wheel, its fingertip controls let you change radio stations, turn up the volume or engage cruise control.

Another steering wheel-mounted control activates the available Bluetooth hands-free phone system. It uses voice commands that allow you to easily communicate with your friends without ever reaching for your phone.

And that's not all. With the Accent Sport Hatchback, heated side mirrors, a driver's blind spot mirror and a tilt-and-telescopic steering wheel are all standard. The steering wheel in your hands? On Accent Sport, it's wrapped in leather, along with the shift knob. You're comfortable with that, right?



PROJECTOR HEADLIGHTS WITH LEDs

On Accent Sport, your path is guided by powerful, visually alluring projector beam headlights with LED accents. That's right, LED accents come standard on Accent Sport – and automatic headlight control is part of the package, too.

SIX-SPEAKER AUDIO SYSTEM

Accent comes standard with a 6-speaker AM/FM/CD/MP3 audio system that includes SiriusXM® Satellite Radio integration.¹ Audio controls on the steering wheel² put the power at your fingertips, while Bluetooth wireless streaming and smartphone/USB auxiliary input jacks serve up even more of your favorite music.

LISTEN TO EVERYTHING, EVERYWHERE

Accent's free 3-month trial for SiriusXM Satellite Radio welcomes you to commercial-free music from every genre, live games from every major sport, breaking news from around the world and the best in comedy, talk and entertainment. Choose from over 150 channels anywhere you are – in your car, or streaming using the SiriusXM app at home or in the office.

BLUETOOTH TECHNOLOGY

It's amazing what Bluetooth can do. For starters, you can stream the music downloads from your smartphone to the Accent's audio system. And then there's all the ways it makes using your phone easier. The available Bluetooth hands-free phone system includes voice recognition, so you can easily reach out and touch someone without ever reaching for your phone. Simple voice commands let you initiate calls and reply to text messages.



EXTERIOR COLORS



Century White



Ironman Silver



Triathlon Gray



Ultra Black



Boston Red



Misty Beige



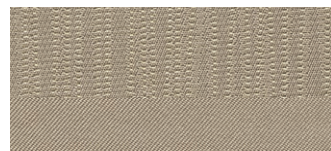
Pacific Blue



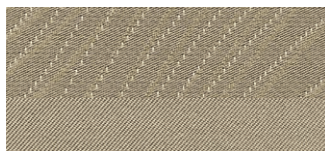
Vitamin C

INTERIOR COLORS

Beige Cloth

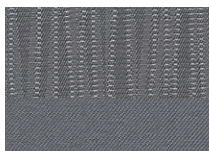


Base
Sedan

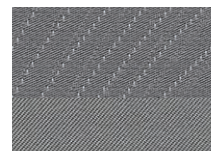


Premium
Sedan

Gray Cloth



Base
Sedan / Hatchback

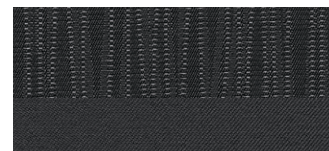


Premium
Sedan



Premium
Hatchback

Black Cloth



Base
Hatchback



Premium
Hatchback

POPULAR FEATURES



60/40 Split-Folding Rear Seats



Cargo Space of 47.5 Cubic Feet
Hatchback



Smartphone/USB Auxiliary Input Jacks



Power Windows/Door Locks/Mirrors



Air Conditioning/Cabin Air Filter



Steering Wheel Audio, Cruise
and Hands-Free Phone Controls

2017

ACCENT SE SEDAN

KEY STANDARD FEATURES

- 137-hp, 1.6L Gasoline Direct Injection 4-cylinder engine with Dual Continuously Variable Valve Timing
- 6-speed manual or available 6-speed automatic transmission with SHIFTRONIC® and Active ECO System
- Hillstart Assist Control
- Motor Driven Power Steering
- Engine cover and hood insulator
- 14" steel wheels with full wheel covers
- Front 2-speed intermittent wipers
- Tinted glass with windshield sunshade band
- Rear window defroster with timer
- Roof-mounted antenna
- Remote keyless entry with alarm
- One-touch triple turn signal
- Power door locks
- Power windows and side mirrors
- Bodycolor door handles and side mirrors
- Trip computer
- Outside temperature display
- AM/FM/SiriusXM/CD/MP3 audio system with 6 speakers and hi-contrast LCD illumination



- Smartphone/USB auxiliary input jacks
- Tilt steering wheel and 6-way adjustable driver seat including height adjustment
- Driver seat armrest and cloth door inserts
- 60/40 split-folding rear seats
- Front door map pockets
- Front passenger seatback pocket
- Sliding sunvisors with vanity mirrors
- Air conditioning
- Cabin air filter
- 6-airbag safety: Front, side and head curtain airbags with Occupant Classification System
- Vehicle Stability Management
- Electronic Stability Control
- Traction Control System
- Anti-lock Braking System with Electronic Brake-force Distribution and Brake Assist
- Active front head restraints and adjustable head restraints for all seating positions
- Front seatbelt pretensioners
- Map, dome and cargo lights

2017

ACCENT VALUE EDITION

SE A/T Standard Features plus:

- + 16" machine-finish alloy wheels
- + Rear disc brakes
- + Steering wheel audio and cruise controls



- + Bluetooth® hands-free phone system with voice commands
- + Sliding armrest storage box

EPA MILEAGE ESTIMATES

(City/Highway/Combined)

	Sedan	Hatchback
• Automatic Transmission	26/36/30 MPG	26/36/30 MPG
• Manual Transmission	27/37/31 MPG	27/37/31 MPG
• Fuel Tank Capacity	11.4 gal	11.4 gal

2017

ACCENT SE HATCHBACK

KEY STANDARD FEATURES

- 137-hp, 1.6L Gasoline Direct Injection 4-cylinder engine with Dual Continuously Variable Valve Timing
- 6-speed manual or available 6-speed automatic transmission with SHIFTRONIC® and Active ECO System
- Hillstart Assist Control
- Cruise control (A/T only)
- Motor Driven Power Steering
- Engine cover and hood insulator
- 14" steel wheels with full wheel covers
- Front 2-speed intermittent wipers
- Tinted glass with windshield sunshade band
- Rear window defroster with timer and rear wiper
- One-touch triple turn signal
- Power windows and door locks
- Remote keyless entry with alarm
- Outside temperature display
- Bodycolor door handles and side mirrors
- AM/FM/SiriusXM/CD/MP3 audio system with 6 speakers and hi-contrast LCD illumination
- Trip computer



- Smartphone/USB auxiliary input jacks
- Driver seat armrest and cloth door inserts
- Tilt steering wheel and 6-way adjustable driver seat including height adjustment
- 60/40 split-folding rear seats
- Front door map pockets
- Front passenger seatback pocket
- Sliding sunvisors with vanity mirrors
- Air conditioning and cabin air filter
- 6-airbag safety: Front, side and head curtain airbags with Occupant Classification System
- Vehicle Stability Management
- Electronic Stability Control
- Traction Control System
- Anti-lock Braking System with Electronic Brake-force Distribution and Brake Assist
- Active front head restraints and adjustable head restraints for all seating positions
- Front seatbelt pretensioners
- Map, dome and cargo lights

WHEELS



14" Steel Wheel



16" Alloy Wheel

EPA ESTIMATES

	Sedan	Hatchback
• Horsepower	137 HP	137 HP
• Coefficient of Drag	0.28 Cd	0.28 Cd
• EPA Classification	Compact	Compact

2017

ACCENT SPORT HATCHBACK

SE A/T Standard Features plus:

- + Sport-tuned steering
- + Steering-wheel audio and cruise controls
- + Tilt-and-telescopic steering wheel
- + Bluetooth® hands-free phone system with voice commands
- + Leather-wrapped steering wheel and shift knob
- + Premium cloth seats
- + Chrome inside door handles
- + Piano black interior accents
- + Sliding armrest storage box



- + Rear disc brakes
- + Front foglights
- + Heated side mirrors with turn signal indicators
- + Driver's blind spot mirror
- + Rear spoiler
- + Projector headlights with LED accents
- + Headlight welcome and escort feature
- + Driver's auto-up window
- + 16" alloy wheels

EXTERIOR DIMENSIONS

	Sedan	Hatchback
• Wheelbase	101.2 in	101.2 in
• Overall Length	172.0 in	162.0 in
• Overall Width, excluding mirrors	66.9 in	66.9 in
• Overall Height	57.1 in	57.1 in
• Tread Width, front/rear [14" wheels]	59.3/59.5 in	59.3/59.5 in
• Tread Width, front/rear [16" wheels]	58.6/58.8 in	58.6/58.8 in
• Ground Clearance	5.5 in	5.5 in

INTERIOR DIMENSIONS

	Sedan	Hatchback
• Head Room, front/rear	39.9/37.2 in	39.9/37.8 in
• Legroom, front/rear	41.8/33.3 in	41.8/33.3 in
• Shoulder Room, front/rear	53.7/53.4 in	53.7/53.4 in
• Hip Room, front/rear	51.3/47.2 in	51.3/47.2 in
• Cargo Volume, rear seats up	13.7 cu ft	21.2 cu ft
• Cargo Volume, rear seats down	-	47.5 cu ft
• Passenger Volume	89.7 cu ft	90.1 cu ft
• Total Interior Volume	103.4 cu ft	111.3 cu ft

 HYUNDAI

Assurance

HYUNDAIASSURANCE.COM

Our commitment to Hyundai owners doesn't end with the transfer of keys. Wherever the road takes you, we've got your back with Hyundai Assurance, an umbrella of services and benefits that includes America's Best Warranty, 24/7 Roadside Assistance, innovative safety and car care features...and more.

AMERICA'S BEST WARRANTY

POWERTRAIN
LIMITED WARRANTY

10 YEARS
100,000 MILES

NEW VEHICLE
LIMITED WARRANTY

5 YEARS
60,000 MILES

ANTI-PERFORATION
WARRANTY

7 YEARS
UNLIMITED MILES

24/7 ROADSIDE
ASSISTANCE

5 YEARS
UNLIMITED MILES



See dealer for LIMITED WARRANTY details. Fuel economy estimated by EPA for comparison only. Mileage may vary. While the information contained in this brochure was correct at the time of printing, specifications and equipment can change. Feature comparisons based on competitor information available at the time of printing. No warranty or guarantee is being extended in this brochure, and Hyundai reserves the right to change product specifications and equipment at any time without incurring obligations. Some vehicles are shown with optional equipment. Specifications apply to U.S. vehicles only. Please contact your Hyundai dealer for current vehicle specifications. As part of Hyundai's commitment to a responsible environment, this brochure was printed using paper certified by the Forest Stewardship Council.® FSC® certification helps ensure that the highest social and environmental standards are met in the making of the paper we use, contributing to conservation, responsible management, and community-level benefits for people near the forests.

