

2018
RENEGADE



Jeep[®]

DISCOVER AWARD-WINNING ADVENTURE



RENEGADE

Access the wide-open world at a whole new level. For the movers who want to change things up a little – or a lot – the capability, advanced technology and Award-Winning interior of Renegade are your invitation to get going. Renegade is designed to comfortably usher you to places off the beaten track or on the straight and narrow highway. You'll welcome the practicality of a fun-to-drive, versatile small SUV, with its clever, new storage cubbies, large cargo capacity and Best-in-Class towing capability* of up to 907 kg (2,000 lb). The smartly designed cabin combines comfort and utility, creating an interior that has been honoured† as one of *Wards* "10 Best." The available dual-pane panoramic sunroof or My Sky™ Open-Air Roof System adds fresh air and light, with its convenient removable roof panels that store neatly in the cargo area. Take a path to adventure with a true Renegade, a unique member of the most awarded SUV lineup ever.‡



4x4
Best-in-Class
CAPABILITY¹

**FUEL-EFFICIENT
POWERTRAINS**

Best-in-Class
TOWING¹
907 KG (2,000 LB)

**AWARD-WINNING
INTERIOR**

**CANADA'S
MOST CAPABLE
SMALL SUV EVER⁵**



CANADA'S MOST CAPABLE SMALL SUV EVER⁵



TRAILHAWK® SHOWN IN JETSET BLUE

AUTO When turned to this mode, Selec-Terrain® does all the work, automatically adjusting vehicle dynamics to best suit the road. To help ensure optimal efficiency, the rear driveline disengages when not needed.

SNOW Adjusts for ultimate performance over snow- and ice-covered roads by maximizing vehicle stability and minimizing oversteer. Major systems auto-engaged and managed in this mode include antilock brakes and traction control.

SAND Converts to a uniquely calibrated Sand mode that utilizes an aggressive throttle and up-shift points to tackle looser, sand-covered surfaces.

MUD Maintains low-speed traction by allowing additional wheel slip via specifically tuned chassis controls, differentials and transmission ratios that are geared to successfully tackle mud.

ROCK Delivers Trail Rated® 4WD Low capability allowing you to crawl over rugged terrain at appropriately safe speeds. Exclusively on Trailhawk.

SELEC-TERRAIN® TRACTION MANAGEMENT SYSTEM

Dial in to the kind of capability that only the Jeep® Brand can offer. This Class-Exclusive system⁶ is included with both of Renegade's available 4x4 systems: Jeep Active Drive and Jeep Active Drive Low. Enjoy secure driving in all kinds of weather, on city streets, on the beach or tackling off-road challenges. Up to five settings help deliver stability so you can explore with confidence. Choose from Auto, Snow, Sand and Mud modes, and, exclusively on Trailhawk®, the addition of Rock mode. Experience authentic Jeep 4x4 capability that can take you to places others only dream of reaching.



TRAILHAWK® SHOWN IN ANVIL

JEEP ACTIVE DRIVE 4x4 SYSTEMS

Whether you choose to go cruising on city streets or exploring on off-road trails, your 4WD-equipped Renegade has the know-how to automatically transition from 4x4 mode into fuel-saving front-wheel drive (FWD). The Class-Exclusive disconnecting rear axle⁶ seamlessly switches from 4x4 into FWD when Selec-Terrain® is in Auto mode, providing a welcome gain in efficiency.

GRABS THE ROAD Jeep Active Drive systems can keep you moving forward, even when just one wheel has traction. Should you experience wheel slippage, this strong 4WD system will automatically adjust to thrust a portion of the engine's power to the wheel (or wheels) with ground contact. This allows Renegade to keep you moving forward at all times.

JEEP ACTIVE DRIVE LOW Maintain control on tough ridges and rocks with the Best-in-Class capability⁴ of Jeep Active Drive Low, with its low range and Trail Rated® 20:1 crawl ratio, found exclusively on Trailhawk®. A strong single-speed unit sends power generated from the engine and transmission to the wheel or wheels that need it most. This allows for enhanced traction and a dynamic driving performance.

KEEP CLIMBING WITH HILL START ASSIST This standard system helps avoid rollback when starting on steep inclines by temporarily keeping the brakes applied, giving you time to transfer your foot to the gas pedal.

STAY STABLE WITH HILL DESCENT CONTROL Monitors throttle, speed and braking when gravity's pull wants to take over. Brakes are automatically applied for a safe and smooth descent. Exclusively on Trailhawk.

BEST-IN-CLASS CAPABILITY⁴

Dare to dream. Take a path to adventure that's uniquely you. Make a stand for individuality. The authentic Jeep® Brand capability of Renegade motivates you to seek freedom, explore with purpose and make exciting discoveries that will show you life as you want it to be lived.

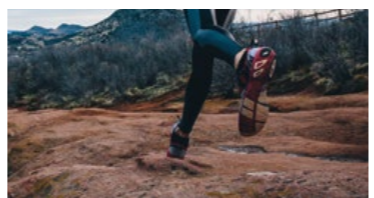
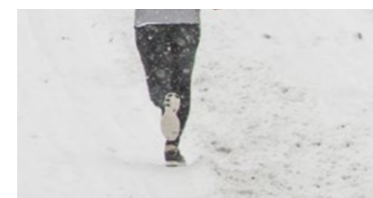
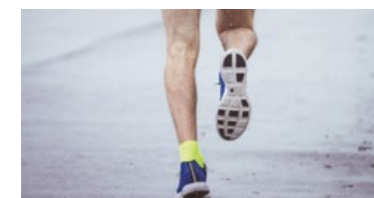


BADGE OF HONOUR

The Trail Rated badge appears on every Renegade Trailhawk, engineered to Go Anywhere, Do Anything. When you see a Trailhawk bearing this badge, you know it has successfully passed performance tests in five categories: Traction, Articulation, Manoeuvrability, Ground Clearance and Water Fording.⁷



TRAILHAWK SHOWN IN GLACIER METALLIC
Always off-road responsibly in approved areas.





BEST-IN-CLASS TOWING¹
UP TO 907 KG (2,000 LB)

NORTH SHOWN IN JETSET BLUE WITH TRAILER TOW GROUP; MOPAR® ACCESSORIES SHOWN



TRAILHAWK® SHOWN IN GLACIER METALLIC

SHIFT INTO “GO”

Renegade takes life on the road as it comes. Whether doing your own shifting with the smooth 6-speed manual transmission or handing control to the available 9-speed automatic transmission, you'll get the most from every excursion. Bring even more along for the ride when you're equipped for towing with the available Trailer Tow Group on 4x4 models, giving you the option to bring along a lot more fun, thanks to 907-kg (2,000-lb) Best-in-Class towing capability!

POWERTRAIN HEROES

2.4L TIGERSHARK® MULTI-AIR® I-4 ENGINE This I-4 improves fuel efficiency for a rating as good as 7.8 L/100 km (36 mpg) highway* with a quiet and refined ride. Acclaimed for its unique and efficient valve-lift system, the Tigershark® incorporates a column of oil flow with a precise control of intake valve events.

2.4L TIGERSHARK | **180 HORSEPOWER** | **175 LB-FT TORQUE**

1.4L MULTI-AIR I-4 TURBO ENGINE MultiAir® technology utilizes electrohydraulic valves for more direct control of air and combustion. This strong performer increases power up to 10 percent; torque up to 15 percent¹ and fuel efficiency up to 7.5 percent¹ over that of conventional naturally aspirated engines. These statistics come together to deliver a welcome fuel economy rating of 7.7 L/100 km (37 mpg) highway*.

1.4L TIGERSHARK | **160 HORSEPOWER** | **184 LB-FT TORQUE**

CLASS-EXCLUSIVE 9-SPEED AUTOMATIC TRANSMISSION² Its fine-tuned ratio spread between gears ensures quick takeoffs and a consistently refined performance. Exceptional efficiencies are experienced through all gears at all speeds. This available transmission is matched to the 2.4L Tigershark MultiAir I-4 engine.

6-SPEED MANUAL TRANSMISSION Matched with the 1.4L MultiAir I-4 Turbo engine, this manual transmission aids efficiency, moving through shifts with smooth gear transitions. Cabin noise is kept to a minimum, whether you're travelling over city streets or off the beaten path to parts unknown.

*See page 21 for full details. ¹Percentages based on averages when compared to non-MultiAir-equipped engines.



LIMITED SHOWN IN BLACK 7



OFF-ROAD MASTER

The Trail Rated® Renegade Trailhawk® has been tested to masterfully perform in five categories that prove its ultimate capability. The standard Jeep® Active Drive Low 4WD system and its unique set of capability features consist of a standard Selec-Terrain® Traction Management System which includes the Trailhawk-exclusive Rock Mode that automatically adjusts a variety of vehicle systems to help conquer rocky terrain with ease. Heavy-gauge steel skid plates provide vital protection from road hazards. Hill Descent Control monitors throttle, speed and braking for smooth descents, and a heavy-duty off-road suspension system adds nearly an inch of additional ground clearance.



TRAILHAWK INTERIOR SHOWN IN BLACK WITH RED ACCENT STITCHING



TRAIL RATED® TEST CATEGORIES



TRACTION Trail Rated traction helps you maintain controlled forward motion. You can climb steep sand dunes, cross icy bridges and master muddy two-tracks. Others may fear untamed terrain, but your Trail Rated Renegade has the traction to master all kinds of driving conditions.



WATER FORDING Traverse that stream with confidence, thanks to additional electrical and body seals, plus a high air-intake location. Renegade has the capability to manage in up to 48 cm (19 in) of water. Always inspect all waterways before proceeding, just to make sure there are no unforeseen pitfalls.



MANOEUVRABILITY Renegade Trailhawk is born with the athletic ability to navigate narrow gaps and handle emergency situations while maintaining its integrity on the trails. Precision steering and optimized wheelbase allow for expert navigation.



ARTICULATION Renegade's suspension systems enhance on- and off-road performance by maximizing flexibility, axle articulation and wheel travel. This category indicates that when one or more wheels are elevated, the Jeep 4x4 system helps the others stay on the ground longer, to keep you moving.



GROUND CLEARANCE Head out knowing that your Trail Rated Renegade has optimized approach, departure and breakover angles designed to clear logs, rocks and uneven ground. Your undercarriage is protected too, with forged skid plates that cover your vehicle's most valuable underbody elements.





DUAL-PANE PANORAMIC POWER SUNROOF

This available sunroof with its power sunshade offers more than an amazing way to look at the world. It can take you to a new world altogether. Two large panes allow passengers in all rows to get a stellar panoramic view of the scenery. With the push of a button, the front pane slides back to let in the fresh air of the outdoors. Add more to every adventure when you can see more and feel more open-air freedom.



For more fresh air, press a button and the power sliding glass front panel opens.

MY SKY™ OPEN-AIR ROOF SYSTEM

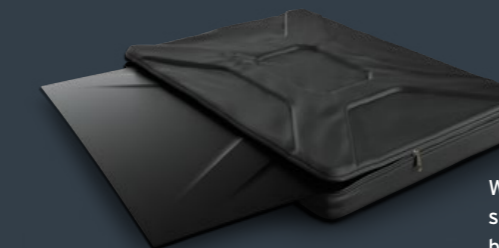
Renegade expands your world with open-air freedom, like only an authentic Jeep® Brand vehicle can. This available feature consists of two easily removable roof panels that let you bring nature and all it offers that much closer, like more sun on your shoulders and wind in your hair. When you want to invigorate your travels and invite the outside world into your cabin, simply push a button with the power retractable option, to open the front My Sky™ panel and expand your world, like only a Renegade can.



Let just the warmth of the sun shine in when the power sliding glass is closed.

(1) The My Sky lets you manually remove both the front and rear panels for a full open-air experience.

(2) The My Sky power retraction operates like a traditional sunroof, allowing fore and aft ventilation of the front panel. Press the button for quick and easy rooftop ventilation.



When you remove the My Sky panels, slip them into the protective storage bag, which fits perfectly into the rear cargo area.



WARDS
10 Best
Interiors™

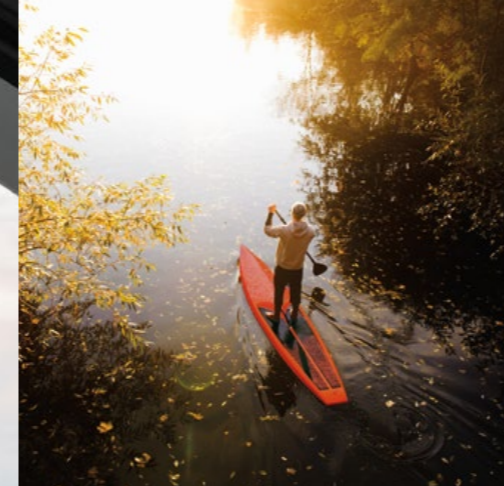
UNIQUE. LIKE YOU.

Add dimension and attitude to your Renegade with Award-Winning interiors. Colour palettes in fabrics and leather-faced options that match your personality. Renegade takes cabin design to a new, eye-catching level, delivering style that's unexpected and very much on point.

WardsAuto 10 Best Interiors awarded in 2015.

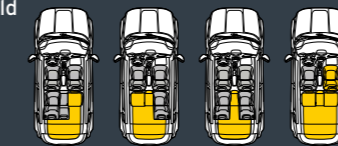
LIMITED SHOWN IN TWO-TONE BLACK/SKI GREY WITH ICE BLUE ACCENT STITCHING

COMFORT LADEN Renegade offers a cabin designed with an array of textures, fabrics and soft-touch surfaces. Available leather-faced seats with perforated inserts are contoured and cushioned for cruising, and accented with special contrast stitching. Front passengers enjoy a standard six-way manual adjustable driver seat and four-way manual adjustable front-passenger seat. Go for the available 12-way power-adjustable driver's seat including four-way power lumbar adjustment for even more customization. In the second row, three rear-seat head restraints[®] are in place for three passengers. Rear-seat foot room is enhanced by wide front-seat tracks.



THE RIGHT FIT

ARRANGED TO YOUR LIKING A large interior volume allows you to accommodate all kinds of cargo and passenger configurations. Turn down the 40/20 sections to carry more cargo in the back, leaving the remaining 40 section open for the second passenger, or fold everything down for serious hauling. The available 40/20/40 split-folding rear seat adds a greater ability to create your own unique living space.



NEW STORAGE FEATURES Clever, new cubby spots and more storage space are always useful. A relocated USB port now resides on the back of the centre console, and a redesigned Selec-Terrain[®] dial (for 4x4 models) gives you more room to stash items out of sight. A special slot, just right for cell phones, is right next to your cup holders. A new storage net in the front-passenger footwell area is perfect for tablets and gaming devices. Front-seat passengers can take hold of the dash-mounted grab handle when adventures get really exciting.



CUSTOM ADJUSTMENT The standard height-adjustable rear cargo floor stands ready to provide increased cargo space. Raise it up for easy, slide-in loading or lower it to have more room to carry taller items. The floor is also reversible, with one side stylishly carpeted and the other conveniently cleanable.



NEW FORWARD
CONSOLE BIN



NEW STORAGE NET
Properly secure all cargo.



BEATSAUDIO™
PREMIUM SOUND
SYSTEM



STAY CONNECTED TO YOUR WORLD

Here's your very own window into a wide circle of connectivity. The available Uconnect® 4 multimedia centre offers a range of communication and entertainment services, delivered straight into your Renegade. Personalize your Uconnect system and enjoy the features you want to use most. Straightforward voice commands,⁹ intuitive controls and simple connectivity make advanced technology easily accessible.



STATS AT HAND

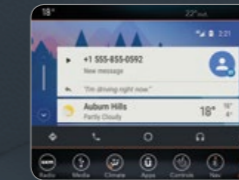
7-INCH FULL-COLOUR DRIVER INFORMATION DISPLAY Buttons on the multi-functional steering wheel let you instantly scroll through a selection of vehicle data, all conveniently displayed directly in front of you. There, on your instrument panel, is an available 7-inch full-colour customizable in-cluster display centre that gives you insight into real-time performance data, and so much more.



BIGGER SCREENS. SMART CONNECTIONS.



SIRIUSXM GUARDIAN¹⁰ Obtain help when you need it most with Roadside Assistance Call and SOS Call from your touchscreen or rearview mirror button. The SiriusXM Guardian¹⁰ mobile app helps to keep you connected by turning your phone into your vehicle's command centre. The one-year trial subscription includes Remote Vehicle Start* to start your car and unlock the doors from virtually anywhere, as well as Stolen Vehicle Assistance alerts, Send & Go™ and much more. This advanced in-vehicle connectivity also offers an available 4G LTE Wi-Fi Hotspot^{11†} to help you stay connected on the go.



SIRIUSXM TRAFFIC¹² AND SIRIUSXM TRAVEL LINK¹² SiriusXM Traffic¹² works with the vehicle's available navigation system to display traffic and accident information to assist in routing around congested areas. SiriusXM Travel Link provides real-time local fuel prices, weather conditions, sports scores and movie times. Subscriptions required. Your first five years of both services are included.

SIRIUSXM SATELLITE RADIO¹² SiriusXM satellite radio with one-year subscription is available and includes over 120 music, news, sports and specialty channels. It also allows you to receive alerts when your favourite song, artist or team is playing on another channel. Instant Replay lets you pause and rewind programs, songs and broadcasts. SiriusXM Tune Start ensures you never miss a beat by starting songs from the beginning when switching between preset channels.

APPLE CARPLAY™¹³ The smarter, safer way to use your iPhone® inside your vehicle. Plug in to seamlessly integrate Uconnect®. You can use the touchscreen or Siri® to make calls, access Apple Music, send and receive messages, get directions optimized for traffic conditions and more, while staying focused on the road. Available.

ANDROID AUTO™¹³ This plug-and-play capability provides a safer way to use Android™ while in your vehicle, sharing information while you easily access the best of Google™: Google Maps with voice-guided navigation and Google Play Music; place phone calls or send and receive messages and ask Google any question by voice command.

3D NAVIGATION IMAGERY Identifying your whereabouts is an exact science with the available Uconnect 4C NAV system's integrated navigation,¹⁴ including 3D landmarks, city models, digital terrain maps, enhanced graphics and one-step voice destination entry.

*When equipped with Remote Start. †Late availability.

GAIN CONFIDENCE

OVER 65 STANDARD AND AVAILABLE SAFETY AND SECURITY FEATURES



PARKVIEW® REAR BACK-UP CAMERA¹⁵ See what's in the way when you're in Reverse. This standard system helps bring previously hidden rear objects to your attention on-screen allowing time to react.



LANE DEPARTURE WARNING (LDW) WITH LANE KEEP ASSIST¹⁵ With a forward-facing camera mounted near the rearview mirror, this available system can gauge the vehicle's position between the road lines and monitors its movement down the road. Should the LDW system detect the vehicle is moving onto either line without the turn signal being activated, it can warn the driver through a visual warning and corrective steering input.



FORWARD COLLISION WARNING WITH ACTIVE BRAKING¹⁵ Radar and video sensors can detect when Renegade is approaching a vehicle or obstacle at an unsafe speed. If front-mounted sensors detect a potential collision, this available active safety feature can send an audible and visual alert to the driver and provide limited braking if the driver does not react in time.



KEYLESS ENTER 'N GO™ Keep your key fob in your pocket or purse and leave your hands free to quickly open the door, take a seat, push a button and head out for fun. Available.



LIMITED SHOWN IN ALPINE WHITE

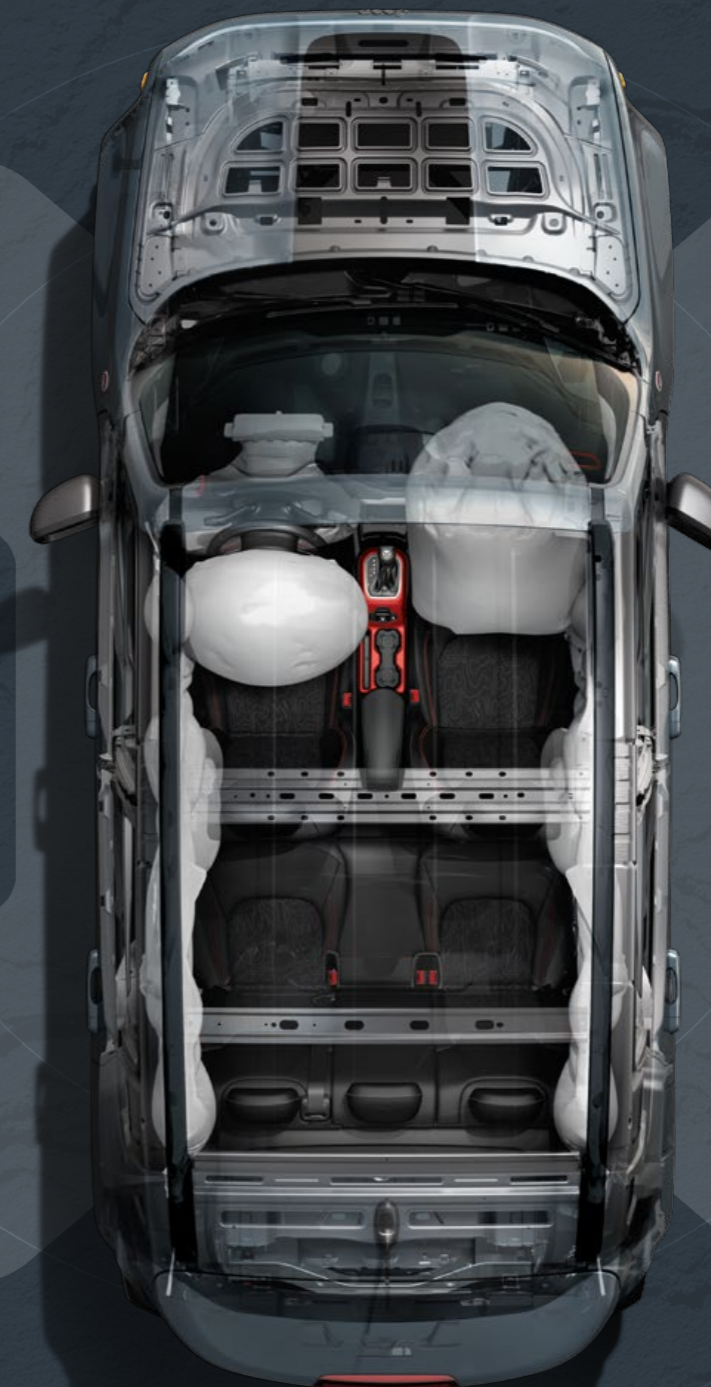


PARK-SENSE® REAR PARK ASSIST SYSTEM¹⁵ Renegade can help you park and back out with grace. When in Reverse, these sensors can detect objects in the back-up pathway and provide an audible and visual warning so you have time to react. Available.

WINDSHIELD WIPER DE-ICER Maintain a clear view of the road ahead during snowy weather with this available packaged feature. Heating elements on the lower inside windshield glass help keep wipers free from ice and the windshield clear for an unobstructed view of the road.



BLIND-SPOT MONITORING WITH REAR CROSS-PATH DETECTION¹⁵ Radar sensors continuously monitor the space between you and other drivers. When you signal to change lanes and the system detects a vehicle in your blind-spot, it can warn you with an audible chime or an illuminated icon in the sideview mirror. When reversing out of a parking spot, Rear Cross-Path Detection can detect vehicles approaching from either side. Available.



ELECTRONIC STABILITY CONTROL (ESC)¹⁶ This standard safety net consists of a vehicle-wide network of sensors that provide fast aid when you're veering off your intended path. ESC¹⁶ coordinates Electronic Roll Mitigation, the antilock brake system, Advanced Brake Assist, All-Speed Traction Control and Trailer Sway Control, sending them into action when needed.

ELECTRONIC ROLL MITIGATION (ERM) Sensors constantly monitor Renegade to anticipate potential risk situations. If things get rough, ERM takes immediate action to help maintain stability and remain under control.



TRAILER SWAY CONTROL (TSC) Keep control of what you're bringing along in tow. As part of ESC,¹⁶ the standard TSC helps keep you and the toys you are towing safely on course.

CHASSIS STRENGTH Renegade delivers exceptional peace of mind with a hero's heart – a strong foundation constructed using advanced lightweight materials with aluminum and high-strength steel.



SEVEN STANDARD AIR BAGS¹⁷ Peace of mind is always with you, thanks to Renegade's robust air bag system. Full-length front and rear side-curtain, driver inflatable knee blocker, seat-mounted side for front occupants, and advanced multistage driver and front-passenger air bags all work together to help provide encompassing protection.

RENEGADE FEATURES AND OPTIONS

SPORT 4x4 / 4x2



POWERTRAIN

- 1.4L MultiAir® 16V I-4 Turbo engine with 6-speed manual transmission
- 2.4L Tigershark® MultiAir I-4 engine with 9-speed automatic transmission

INTERIOR AMENITIES

- 3 rear-seat head restraints⁸
- 3.5-inch monochrome Electronic Vehicle Information Centre (EVIC)
- 6 speakers
- 60/40 split-folding rear seat
- Cargo tie-down loops
- Cloth seating
- Front and rear carpet floor mats
- Front centre sliding armrest
- Front-passenger fold-forward seat
- Height-adjustable, reversible rear cargo floor
- Manual 6-way driver's seat adjust and 4-way passenger seat adjust
- Media hub with USB, SD card slot reader and auxiliary audio input jack
- Passenger assist grab handle
- Power windows with front 1-touch up-and-down
- Remote keyless entry with push-button start
- Speed-sensitive power door locks
- Steering wheel-mounted audio controls

- Tilt/telescoping steering column
- Two 12-volt power outlets
- Uconnect® 3 multimedia centre with 5-inch touchscreen and hands-free communication⁹ with Bluetooth® streaming audio

EXTERIOR FEATURES

- 4.438 final drive ratio
- 16-inch Low-Gloss Black styled steel wheels and 215/65R16 all-season tires
- Black mirrors and door handles
- Body-colour roof
- Capless fuel filler
- Halogen headlamps with off-time delay
- Incandescent taillamps
- Rear window defroster, wiper and washer
- Solar-Control glass

SAFETY & SECURITY

- 4-wheel antilock disc brakes and Advanced Brake Assist
- 7 standard air bags¹⁷ including driver's knee blocker
- Child Seat Anchor System, LATCH-ready
- Electronic Park Brake with Safe Hold
- Electronic Roll Mitigation
- Electronic Stability Control (ESC)¹⁶ with Hill Start Assist and All-Speed Traction Control
- Engine block heater

- ParkView® Rear Back-Up Camera¹⁵
- Tire pressure monitoring system
- Tire service kit
- Trailer Sway Control

4x4 ADDS / DIFFERENCES

- Air conditioning
- Jeep® Active Drive 4x4 system
- Power, heated exterior mirrors
- Selec-Terrain® Traction Management System
- Steering wheel-mounted cruise control

OPTIONAL EQUIPMENT

- Black Side Roof Rails
- Full-Size Temporary-Use Spare Tire
- My Sky™ Open-Air Roof System with Power/Removable Roof Panels
- Passive Entry Remote Start Package (automatic only)
- Power and Air Group (4x2 only)
- Positive Temperature Coefficient (PTC) Auxiliary Interior Heater (manual only)
- Sport Appearance Group
- Uconnect 7.0 Group

LIMITED 4x4



POWERTRAIN

- 2.4L Tigershark® MultiAir® I-4 engine with 9-speed automatic transmission

ENHANCEMENTS vs. NORTH

- 3.734 final drive ratio
- 7-inch full-colour customizable in-cluster display centre
- 18-inch aluminum polished and painted Granite Crystal wheels with 225/55R18 all-season tires
- 40/20/40 split-folding rear seat with trunk pass-through
- 115-volt auxiliary power outlet
- Auto-dimming rearview mirror
- Black painted roof
- Bright power, heated exterior mirrors with supplemental turn signals

- Bright side roof rails and bright exhaust tip
- Heated front seats and heated leather-wrapped steering wheel
- Jeep® Active Drive 4x4 system
- Keyless Enter 'n Go™ with proximity entry and remote start system
- Leather-faced seating and leather-wrapped shift knob
- Power 12-way driver's seat including 4-way power lumbar adjust
- Rain-sensing windshield wipers
- Selec-Terrain® Traction Management System
- Tire service kit
- Windshield wiper de-icer

OPTIONAL EQUIPMENT

- 18-inch Aluminum Polished and Painted Satin Silver Wheels
- Advanced Technology Group
- BeatsAudio™ Premium Sound System
- Dual-Pane Panoramic Sunroof
- Full-Size Spare Tire with Matching Wheel
- Full-Size Temporary-Use Spare Tire
- High Intensity Discharge (HID) Headlamps
- My Sky™ Open-Air Roof System with Power/Removable Roof Panels
- Safety and Security Group
- Trailer Tow Group
- Uconnect® 8.4 NAV Group

TRAILHAWK® 4x4



POWERTRAIN

- 2.4L Tigershark MultiAir I-4 engine with 9-speed automatic transmission

SELECT TRAILHAWK EQUIPMENT

- 4.334 final drive ratio
- 7-inch full-colour customizable in-cluster display centre
- 17-inch aluminum polished and painted Semi-Gloss Black wheels and 215/65R17 all-season tires
- 60/40 split-folding rear seat
- 115-volt auxiliary power outlet
- Accent-colour exterior badging
- Accent-colour power, heated exterior mirrors with supplemental turn signals
- Air conditioning with dual-zone automatic temperature control
- All-season floor mats
- Apple CarPlay™ and Android Auto™¹³

- Black hood decal
- Black painted roof
- Black side roof rails
- Full-size spare tire
- Hill Descent Control
- Jeep Active Drive Low
- ParkView® Rear Back-Up Camera¹⁵
- Premium cloth seating
- Rain-sensing windshield wipers
- Red tow hooks (2 front, 1 rear)
- Selec-Terrain Traction Management System with Rock mode
- Skid plates: fuel tank, transfer case, transmission and front suspension
- Trail Rated® badge
- Uconnect 4 multimedia centre with 7-inch touchscreen and hands-free communication⁹ with Bluetooth® streaming audio
- Unique front and rear fascia

OPTIONAL EQUIPMENT

- BeatsAudio Premium Sound System
- Cold Weather Group
- Dual-Pane Panoramic Sunroof
- HID Headlamps
- My Sky Open-Air Roof System with Power/Removable Roof Panels
- Passive Entry Remote Start Package
- Popular Equipment Group
- Premium Leather Group
- Safety and Security Group
- Trailer Tow Group
- Uconnect 8.4 NAV Group

NORTH 4x4 / 4x2



POWERTRAIN

- 1.4L MultiAir 16V I-4 Turbo engine with 6-speed manual transmission
- 2.4L Tigershark MultiAir I-4 engine with 9-speed automatic transmission

ENHANCEMENTS vs. SPORT

- 16-inch aluminum polished and painted Granite Crystal wheels
- 17-inch aluminum painted Tech Silver wheels (2.4L)
- Air conditioning with dual-zone automatic temperature control with integrated climate controls in touchscreen radio
- Ambient LED interior lighting
- Apple CarPlay™ and Android Auto™¹³
- Automatic headlamps
- Black side roof rails
- Body-colour door handles
- Body-colour power, heated exterior mirrors
- Cornering front fog lamps
- Deep-tint privacy glass
- Front seatback map pockets
- Leather-wrapped steering wheel

- Premium cloth seats
- Remote USB port in centre console
- SiriusXM satellite radio with 1-year subscription¹²
- Steering wheel-mounted audio and cruise controls
- Sun visors with illuminated vanity mirrors
- Uconnect 4 multimedia centre with 7-inch touchscreen and hands-free communication⁹ with Bluetooth streaming audio

4x4 ADDS / DIFFERENCES

- Jeep Active Drive 4x4 system
- Selec-Terrain Traction Management System

OPTIONAL EQUIPMENT

- 18-inch Aluminum Polished and Painted Granite Crystal Wheels
- Advanced Technology Group
- Altitude Package
- BeatsAudio™ Premium Sound System
- Black Painted Roof (4x4 only)
- Cold Weather Group
- Dual-Pane Panoramic Sunroof
- Full-Size Temporary-Use Spare Tire

- High Intensity Discharge Headlamps
- My Sky Open-Air Roof System with Power/Removable Roof Panels
- Passive Entry Remote Start Package (automatic only)
- Popular Equipment Group
- PTC Auxiliary Interior Heater (manual only)
- Safety and Security Group
- Trailer Tow Group (4x4 only)
- Uconnect 8.4 NAV Group

ABOUT THIS CATALOGUE. Since the time of printing, some of the information you'll find in this catalogue may have been updated. Ask your retailer for details. Some of the equipment shown or described throughout this catalogue is available at extra cost. Specifications, descriptions, illustrative materials and all competitive comparisons contained herein are as accurate as known at the time this publication was approved for printing. FCA Canada Inc. reserves the right to make changes at any time without notice and without incurring obligation. For the price of the model with the equipment you desire or verification of specifications contained herein, see your Chrysler, Jeep, Dodge and Ram retailer. Chrysler, Dodge, Jeep, Ram, the Jeep grille, Mopar, Renegade, Mopar Vehicle Protection, Park-Sense, ParkView, Selec-Terrain, Tigershark, Trailhawk, Trail Rated and Uconnect are registered trademarks, and Keyless Enter 'n Go, My Sky, Pentastar and Send & Go are trademarks of FCA US LLC. Android, Android Auto, and Google Play are trademarks of Google LLC. The trademarks Beats by Dr. Dre, Beats, BeatsAudio and the b logo are the property of Beats Electronics, LLC. Bluetooth is a registered trademark of Bluetooth SIG, Inc. Cummins is a registered trademark of Cummins, Inc. Facebook is a registered trademark of Facebook, Inc. iPhone and Siri are registered trademarks of Apple Inc. MultiAir is a registered trademark of C.R.F. Società Consortile per Azioni, used under licence by FCA US LLC. SIRIUS, XM and related marks and logos are trademarks of SiriusXM Radio Inc. The Twitter name, logo, Twitter T, Tweet and Twitter bird are trademarks of Twitter, Inc. in the United States and other countries. ©2018 FCA Canada Inc. All rights reserved.

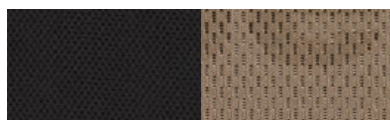
MOPAR VEHICLE PROTECTION. FCA Canada Inc. has a vested interest in your satisfaction and owner experience with your new vehicle. Mopar Vehicle Protection offers extended service and maintenance plans to help ensure you'll enjoy your vehicle for many years down the road — for just pennies a day. For more information on comprehensive vehicle coverage, see your local Chrysler, Jeep, Dodge and Ram retailer or call (800) 465-2001.

WARRANTIES. 2018 Chrysler, Jeep, Dodge and Ram vehicles are backed by a 5-year or 100,000-kilometre fully transferable Powertrain Limited Warranty* with \$0 deductible plus 24-hour roadside assistance! SRT vehicles are backed by a 3-year or 60,000-kilometre fully transferable Powertrain Limited Warranty* with \$0 deductible plus 24-hour roadside assistance. Basic Warranty coverage is for 3 years or 60,000 kilometres! Rust-through coverage on all body sheet metal is for 3 years. The Cummins Turbo Diesel engine is protected by a separate Limited Warranty, covering the engine for 5 years or 160,000 kilometres! The EcoDiesel engine is backed by a 5-year or 100,000-kilometre fully transferable Powertrain Limited Warranty* with \$0 deductible plus 24-hour roadside assistance!

*Whichever comes first. Some conditions may apply. *The 5-Year/100,000-Kilometre Powertrain Limited Warranty does not apply to vehicles sold for certain commercial uses. See your retailer for full details.

DISCLAIMERS. (1) When properly equipped. Jeep "Small SUV" sub-segmentation based on Small Sport and Cross/Utility vehicles including Nissan Juke, Mini Countryman, Mini Paceman, Buick Encore, Honda HR-V. (2) The Jeep Brand SUV lineup has received more awards over its lifetime than any other competitive SUV lineup. (3) Based on IHS Markit Automotive Canadian New Vehicle Total Registrations 2012 to 2016 and CYTD September 2017 in all Brands, SUV segments and all 4x4/AWD models. (4) Jeep "Small SUV" sub-segmentation based on Small Sport and Cross/Utility vehicles including Nissan Juke, Mini Countryman, Mini Paceman, Buick Encore, Honda HR-V. Best-in-Class 4x4 capability based on Jeep B-SUV offering low-range power transfer unit (PTU) with 20:1 crawl ratio, low-range 4x4 capability. (5) Most Capable Small SUV Ever is based on historical Canadian unibody B-SUV segment competitors as identified by *WardsAuto* Small Crossover and Small SUV segments (years 1985 – 2014). 4x4 capability based on Jeep B-SUV offering low-range power transfer unit (PTU) with 20:1 crawl ratio, low-range 4x4 capability. (6) Jeep "Small SUV" sub-segmentation based on Small Sport and Cross/Utility vehicles including Nissan Juke, Mini Countryman, Mini Paceman, Buick Encore, Honda HR-V. (7) Do not attempt water fording unless depth is known to be less than 48 cm (19 inches). Traversing water can cause damage that may not be covered by the new vehicle warranty. Always off-road responsibly in approved areas. (8) Always sit properly with the head restraint properly adjusted. Never place anything in front of the head restraint. (9) Driving while distracted can result in loss of vehicle control. Only use mobile phones and other devices, even with voice commands, when it is safe to do so. Voice commands of phone require a Bluetooth-compatible phone. (10) All SiriusXM Guardian-equipped vehicles come with a 12-month trial effective on the date of purchase or lease of a new vehicle. Enrollment in the trial is required to receive service. Upon expiration of the trial period, purchase of a subscription is required to continue SiriusXM Guardian. Services can only be used where cellular coverage is available. Use Uconnect and SiriusXM Guardian Terms of Service for complete service limitations. (11) Wi-Fi Hotspot available through third-party subscription. Requires Internet-enabled mobile device. See retailer for details. This feature is not intended for use by the driver while the vehicle is in motion. Always drive carefully. (12) Requires SiriusXM radio subscriptions governed by SIRIUS terms and conditions available at siriusxm.ca. (13) Driving while distracted can result in loss of vehicle control. Only use mobile phones and other devices, even with voice controls, when it is safe to do so. Apple CarPlay requires a compatible iPhone connected via USB cable to the Uconnect system. Android Auto requires the Android Auto app on Google Play and an Android-compatible smartphone running Android 5.0 Lollipop or higher. Data plan rates may apply. (14) Never program while driving. GPS mapping and available 3D navigation may not be detailed or available in all areas or reflect current road regulations. (15) This is a driver convenience system, not a substitute for active driver involvement. The driver must remain aware of his/her surroundings and be prepared to take corrective action to avoid collisions. (16) No system can repeal the laws of physics or overcome careless driving actions. Performance is limited by available traction, which snow, ice and other conditions can affect. When the warning lamp flashes, the driver needs to use less throttle and adapt speed and driving behaviour to prevailing road conditions. (17) The Advanced Front Air Bags in this vehicle are certified to the federal regulations for Advanced Air Bags. Children 12 years old and younger should always ride buckled up in a rear seat. Infants in rear-facing child restraints should never ride in the front seat of a vehicle with a passenger front air bag. All occupants should always wear their lap and shoulder belts properly. (18) Siri Eyes Free requires an iPhone equipped with Siri. Certain features not available while the vehicle is in motion. iPhone must be within active cellular range. Customer's existing iPhone data rates apply to Internet-supported features.

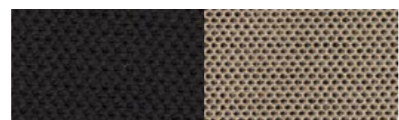
FABRIC, PAINT[†] AND WHEEL OPTIONS



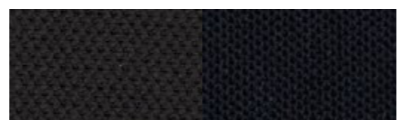
Cloth – Two-tone Black/Sandstorm with mesh inserts and Tan accent stitching
Standard on Sport



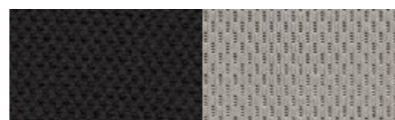
Cloth – Black with mesh inserts and Black accent stitching
Standard on Sport



Cloth – Two-tone Black/Sandstorm with embossed cloth inserts and Tan accent stitching
Standard on North



Cloth – Black with embossed cloth inserts and Black accent stitching
Standard on North



Cloth – Two-tone Black/Ski Grey with embossed inserts and Ice Blue accent stitching
Standard on North



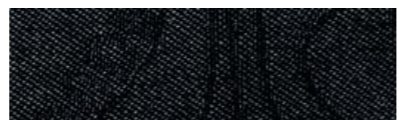
Cloth – Black deluxe
Standard on Altitude



Leather-faced – Black with Ski Grey accent stitching
Standard on Limited



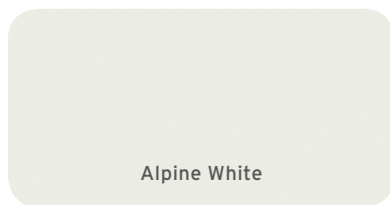
Leather-faced – Two-tone Black/Ski Grey leather with Ice Blue accent stitching
Standard on Limited



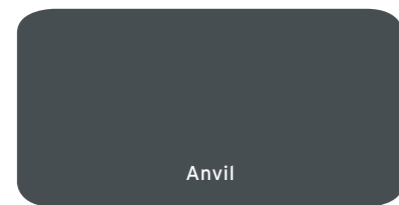
Cloth – Black topographic with Red accent stitching
Standard on Trailhawk[®]



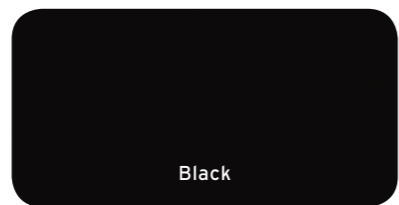
Leather-faced – Black with Red accent stitching
Available on Trailhawk



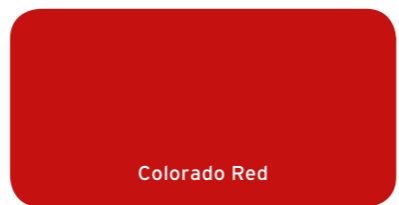
Alpine White



Anvil



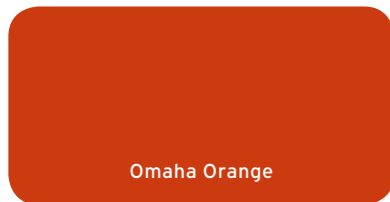
Black



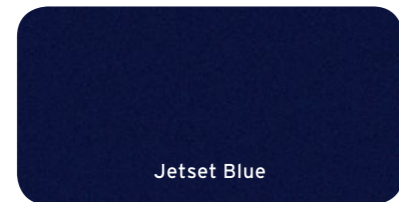
Colorado Red



Glacier Metallic



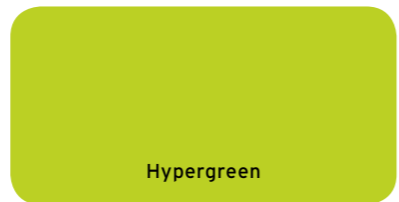
Omaha Orange



Jetset Blue



Solar Yellow



Hypergreen



Granite Crystal Metallic

[†]Colours may not be available on all models, and may be limited/restricted. Please see your retailer for details.



16-inch Low-Gloss Black styled steel
Standard on Sport



16-inch aluminum polished and painted Granite Crystal
Standard on North with 1.4L engine
Available on Sport



17-inch Tech Silver aluminum
Standard on North with 2.4L engine



18-inch Gloss Black aluminum
Standard on Altitude



17-inch aluminum polished and painted Semi-Gloss Black
Standard on Trailhawk



18-inch aluminum polished and painted Granite Crystal
Optional on North



18-inch aluminum polished and painted Satin Carbon
Standard on Limited



18-inch aluminum polished and painted Satin Silver
Optional on Limited

POWER AND FUEL ECONOMY

Based on 2018 *EnerGuide* fuel consumption ratings. Government of Canada test methods used. Your actual fuel consumption will vary based on driving habits and other factors. For *EnerGuide* information, please ask your retailer or visit the Government of Canada Web site: www.vehicles.nrcan.gc.ca

Engine	Transmission	Horsepower	Torque (lb-ft)	Drive Type	L/100 km (mpg)	
					City	Highway
1.4L MultiAir [®] I-4 Turbo	6-speed manual	160	184	4x2	9.9 (29)	7.7 (37)
1.4L MultiAir I-4 Turbo	6-speed manual	160	184	4x4	9.9 (29)	7.7 (37)
2.4L Tigershark [®] MultiAir I-4	9-speed automatic	180	175	4x2	10.8 (26)	7.8 (36)
2.4L Tigershark MultiAir I-4	9-speed automatic	180	175	4x4	11.2 (25)	8.2 (34)

SPECIFICATIONS[§]

Curb Weight, kg (lb)	4x2	4x4	Trailhawk [®] 4x4
1.4L MultiAir I-4 Turbo	1386 (3056)	1456 (3210)	N/A
2.4L Tigershark MultiAir I-4	1436 (3166)	1509 (3327)	1583 (3490)
GVWR, kg (lb)			
GVWR	1940 (4277)	2080 (4586)	2080 (4586)
Towing, kg (lb)			
1.4L MultiAir I-4 Turbo	Not Recommended		
2.4L Tigershark MultiAir I-4 (maximum)	N/A	907 (2000)	907 (2000)
Exterior, mm (in)			
Wheelbase	2570 (101.2)	2570 (101.2)	2570 (101.2)
Front Track	1540 (60.6)	1540 (60.6)	1540 (60.6)
Rear Track	1540 (60.6)	1540 (60.6)	1540 (60.6)
Overall Length	4232 (166.6)	4232 (166.6)	4232 (166.6)
Overall Height	1689 (66.5)	1689 (66.5)	1689 (66.5)
Overall Width (with open mirrors)	2023 (79.6)	2023 (79.6)	2023 (79.6)
Ground Clearance (minimum running)	170 (6.7)	203 (8.0)	221 (8.7)
Interior, mm (in)	Front	Rear	
Headroom (without sunroof / with sunroof)	1045 (41.1) / 1009 (39.7)	1029 (40.5) / 1029 (40.5)	
Legroom	1046 (41.2)	891 (35.1)	
Hip Room	1348 (53.1)	1319 (51.9)	
Shoulder Room	1419 (55.9)	1400 (55.1)	
Volumes & Capacities			
Cargo, Rear Seats Up, L (cu ft)	524 (18.5)		
Cargo, Rear Seats Folded, L (cu ft)	1438 (50.8)		
Seating Capacity	5		
Fuel Tank Capacity, L (imp gal)	48 (10.6)		

[§]Maximum ratings based on properly equipped vehicles.

PACKAGE DETAILS

ADVANCED TECHNOLOGY GROUP

- Auto High-Beam Headlamp Control
- Forward Collision Warning with Active Braking¹⁵
- Lane Departure Warning with Lane Keep Assist¹⁵
- Park-Sense[®] Rear Park Assist System¹⁵

ALTITUDE PACKAGE

- 18-inch Gloss Black aluminum wheels
- Black deluxe cloth seats
- Black side window mouldings
- Exterior mirrors with supplemental turn signals
- Gloss Black exterior badging
- Gloss Black fascia appliqué
- Gloss Black instrument panel bezels
- Gloss Black steering wheel bezel

COLD WEATHER GROUP

- All-season floor mats
- Heated front seats
- Heated steering wheel
- Positive Temperature Coefficient (PTC) auxiliary interior heater (manual only)
- Rain-sensing windshield wipers
- Windshield wiper de-icer

PASSIVE ENTRY REMOTE START PACKAGE

- Keyless Enter 'n Go[™] with proximity entry and push-button start
- Remote start

POPULAR EQUIPMENT GROUP

- 40/20/40 split-folding rear seat with trunk pass-through
- 115-volt auxiliary power outlet
- Auto-dimming rearview mirror
- Power 12-way driver's seat including 4-way power lumbar adjust

POWER AND AIR GROUP

- Air conditioning
- Power, heated exterior mirrors
- Steering wheel-mounted cruise control

PREMIUM LEATHER GROUP

- 40/20/40 split-folding rear seat with trunk pass-through
- Auto-dimming rearview mirror
- Heated front seats
- Heated steering wheel
- Leather-faced seating
- Power 12-way driver's seat including 4-way power lumbar adjust
- Windshield wiper de-icer

SAFETY AND SECURITY GROUP

- Blind-Spot Monitoring with Rear Cross-Path Detection¹⁵
- Cargo cover
- Rain-sensing windshield wipers
- Security alarm

SPORT APPEARANCE GROUP

- 16-inch aluminum polished and painted Granite Crystal wheels
- Black roof rails
- Deep-tint privacy glass

TRAILER TOW GROUP

(4x4 with 2.4L engine only)

- 4-pin wiring harness
- Class III hitch receiver

UCONNECT[®] 7.0 GROUP

- Air conditioning with dual-zone automatic temperature control
- Apple CarPlay[™] and Android Auto[™]¹³
- Integrated climate controls in touchscreen radio
- SiriusXM satellite radio including 1-year subscription¹²
- Uconnect 4 with 7-inch touchscreen display

UCONNECT 8.4 NAV GROUP

- 7-inch full-colour customizable in-cluster display centre
- Apple CarPlay and Android Auto¹³
- HD Radio (where stations are available)
- Premium Navigation¹⁴ with pinch-and-zoom multi-touch gestures, 1-step voice destination entry and 3D landmarks, city models and terrains
- Siri[®] Eyes Free¹⁸ for iPhone[®] 4s and later
- SiriusXM Guardian¹⁰
- SiriusXM satellite radio including 1-year subscription¹²
- SiriusXM Travel Link and SiriusXM Traffic including 5-year subscription¹²
- Uconnect 4C NAV with 8.4-inch full-colour high-resolution touchscreen display



Jeep®



(800) 361-3700

jeep.ca



Like us on:
facebook.com/jeepcanada



Follow us on:
twitter.com/jeepcanada



Sign up for updates at:
jeep.ca

52018C596E